

Shower Valves



Shower valves for every application.

Chicago Faucets offers a selection of shower valves to match your unique needs, design, and budget. From our pressure balancing valve to our two thermostatic/pressure balancing valves you can count on consistent, durable, and dependable shower performance. Each valve is engineered to provide a consistent, safe temperature range for your application and is designed to help reduce the risk of scalding. Like all Chicago Faucets, our line of shower valve products are manufactured specifically for high use areas and are ideal for education, healthcare, hospitality, multi-family, and fitness applications.



Pressure Balancing

Our pressure balancing shower valve is designed to respond immediately to changes in hot or cold water pressure to provide a safe, comfortable shower. If either supply pressure fails, the valve will shut down instantaneously. A proven, dependable diaphragm/poppet cartridge is housed in a rugged, bronze casting.



Thermostatic/Pressure Balancing

Our thermostatic/pressure balancing valve provides true protection against changes in both pressure and temperature. Using advanced thermal actuator technology, this valve provides consistent temperature within 5° F and can compensate for 50% fluctuation in pressure and 25° F changes in temperature. The self-contained cartridge is easy to replace and installs in just minutes.



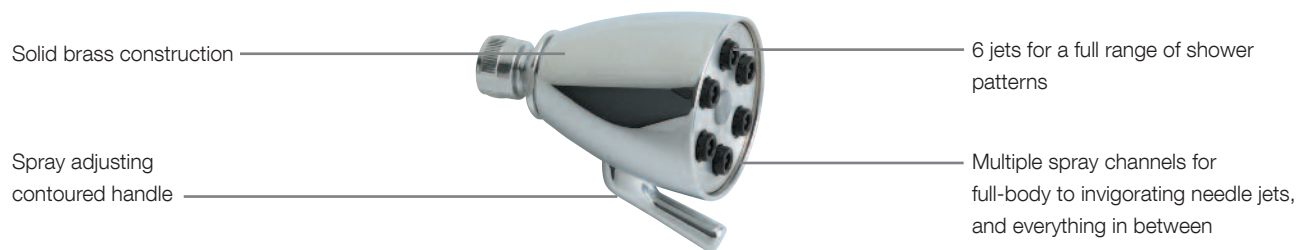
TempShield™ Thermostatic/Pressure Balancing

The Chicago Faucets TempShield thermostatic/pressure balancing valve allows the user to select a precise water temperature for showering. Tested and factory preset not to exceed 112° F, the TempShield helps safeguard against scalding.

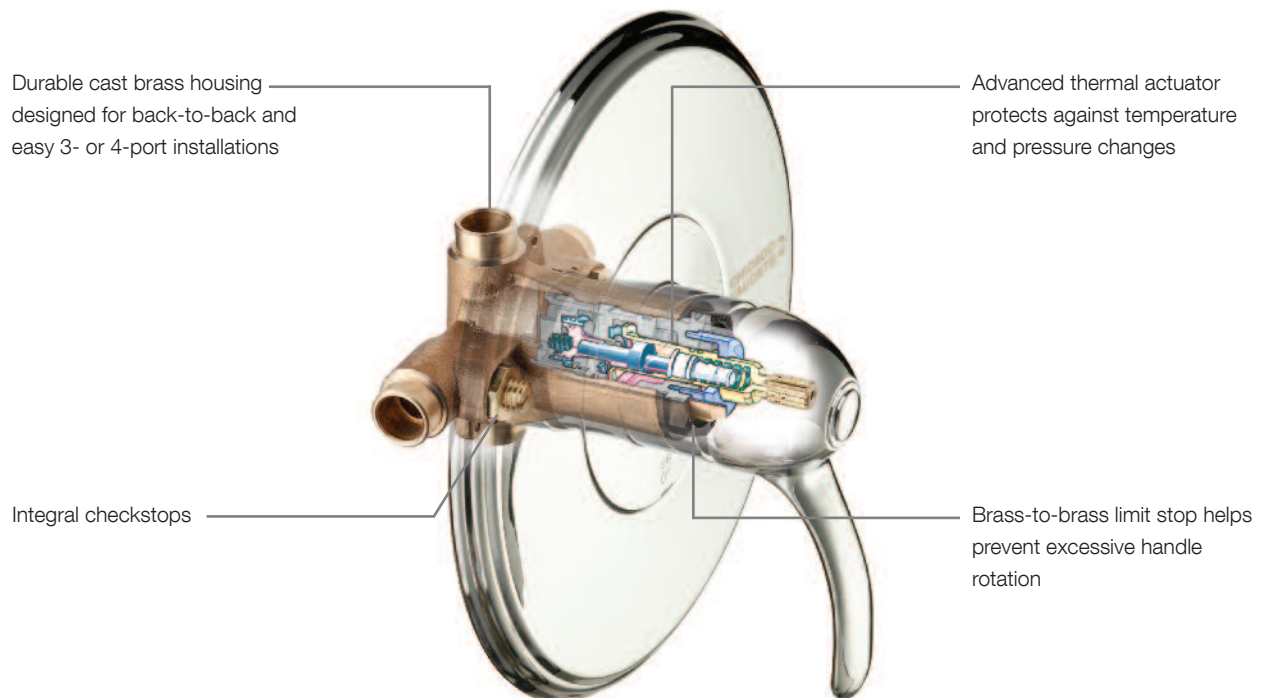
A shower system for extra protection and total comfort.

The Chicago Faucets thermostatic/pressure balancing shower valve provides extra protection from scalding and thermal shocks by constantly monitoring both the water temperature and pressure. The rotating handle control provides a wide comfort zone that can be gradually and precisely adjusted to regulate water temperature from cold to hot. Water temperature can be controlled even further with limit stops that restrict handle movement toward the full hot position. Our adjustable shower head provides a full range of shower patterns for the ultimate in comfort.

600-CP Adjustable Shower Head



1905-VOCCP Thermostatic/Pressure Balancing Valve





Pressure Balancing Valve

Chicago Faucets pressure balancing valve provides near instantaneous response to changes in both hot and cold line pressure. If either supply fails completely, the valve will shut down immediately to help reduce the chance of scalding or thermal shock.

- 3- or 4-port valve in durable cast bronze housing
- Proven, dependable diaphragm/poppet cartridge protects against changes in pressure
- Adjustable temperature limit stop
- Dirt and lime resistant Celcon® components stand up to harsh water conditions
- 1/2" nominal copper sweat hot and cold inlets and outlets



1900-VOCCP Valve with Trim



1900-VONF Valve Only

Complete Systems



1900-CP

- 620-A Shower Head
- Diverter Tub Spout
- Not ADA Compliant



1900-600CP

- 600-A Shower Head
- Diverter Tub Spout
- Not ADA Compliant



1902-CP

- 620-A Shower Head



1902-600CP

- 600-A Shower Head



1902-621CP

- 621 Shower Head

Trim Kits



1900-TKCP

- 620-A Shower Head
- Diverter Tub Spout
- Not ADA Compliant



1900-TK600CP

- 600-A Shower Head
- Diverter Tub Spout
- Not ADA Compliant



1902-TKCP

- 620-A Shower Head

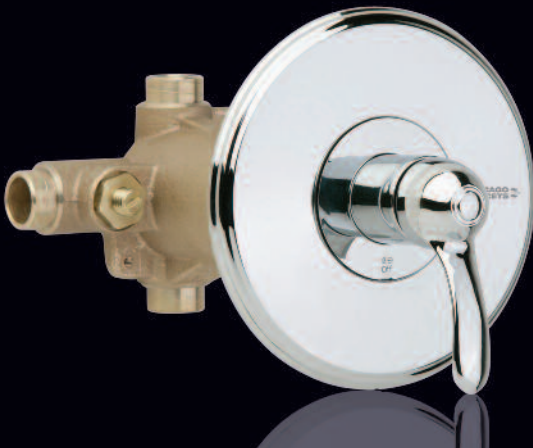


1902-TK600CP

- 600-A Shower Head



Specifications: Chicago Faucets pressure balancing mixing valves perform to the requirements of standards ASSE 1016 and CSA B125 and meet the Americans with Disabilities Act unless otherwise stated.



Thermostatic/Pressure Balancing Valve

An advanced thermal actuator allows our thermostatic/pressure balancing mixing valve to constantly monitor changes in water temperature and pressure to consistently deliver blended water within a specific range. If either supply fails completely, the valve will shut down immediately to help reduce the chance of scalding or thermal shock.

- 3- or 4-port valve in durable cast bronze housing
- Advanced thermal actuator protects against changes in temperature and pressure
- Brass-to-brass limit stop prevents excessive handle rotation
- Easy access to integral checkstops
- 1/2" nominal copper sweat hot and cold inlets and outlets



1905-VOCCP Valve with Trim



1905-VONF Valve Only

Complete Systems



1905-CP

- 620-A Shower Head
- Diverter Tub Spout
- Not ADA Compliant



1905-600CP

- 600-A Shower Head
- Diverter Tub Spout
- Not ADA Compliant



1907-CP

- 620-A Shower Head



1907-600CP

- 600-A Shower Head



1907-621CP

- 621 Shower Head

Trim Kits



1905-TKCP

- 620-A Shower Head
- Diverter Tub Spout
- Not ADA Compliant



1905-TK600CP

- 600-A Shower Head
- Diverter Tub Spout
- Not ADA Compliant



1907-TKCP

- 620-A Shower Head



1907-TK600CP

- 600-A Shower Head



Specifications: Chicago Faucets thermostatic/pressure balancing mixing valves perform to the requirements of standards ASSE 1016 and CSA B125 and meet the Americans with Disabilities Act unless otherwise stated.



TempShield™ Thermostatic/Pressure Balancing Valve

Chicago Faucets thermostatic/pressure balancing valve provides near instantaneous response to changes in both hot and cold line pressure. If either supply fails completely, the valve will shut down immediately to help reduce the chance of scalding or thermal shock.

- Allows user to select specific temperature range
- Protects against temperature and pressure changes
- Lever control handles
- Choice of Quaturn™ or ceramic disc cartridge
- Integral check stops
- Hot water limit factory preset at 112° F
- 1/2" NPT female inlets and outlets

Complete Systems



2500-CP

- 620-A Shower Head
- Diverter Tub Spout
- Not ADA Compliant



2502-600CP

- 600-A Shower Head
- Quaturn Operating Cartridge

Valve and Trim



2500-VOCCP

- Quaturn Operating Cartridge



2500-VOCKKCP

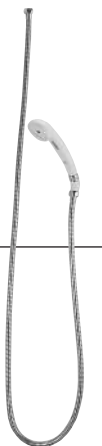
- Ceramic Disc Operating Cartridge



Specifications: TempShield shower valves perform to the requirements of standards ASME A112.18.1M, CSA B125 and meet the Americans with Disabilities Act unless otherwise stated.

150-CP

- Hand and Wall Shower Fitting
- 2.5 GPM Hand Spray
- Wall Hook
- 60" Chrome Plated Stainless Steel Hose



With 60" White Vinyl Hose: 150-WVCP

151-CP

- Hand and Wall Shower Fitting
- 2.5 GPM Hand Spray
- 24" Spray Adjustable Wall Bar
- 60" Chrome Plated Stainless Steel Hose



With 60" White Vinyl Hose: 151-WVCP

153-CP

- Hand and Wall Shower Fitting
- 2.5 GPM Hand Spray
- 48" Spray Adjustable Wall Bar
- 69" Chrome Plated Stainless Steel Hose



With 69" White Vinyl Hose: 153-WVCP

600-ACP

- Shower Head and Arm
- Adjustable Spray Pattern
- Adjustable Swivel Joint Head
- 2.5 GPM Max. Flow Rate @ 80 PSI
- 1/2" NPT Female Inlet

**600-CP**

- Shower Head
- Adjustable Spray Pattern
- Adjustable Swivel Joint Head
- 2.5 GPM Max. Flow Rate @ 80 PSI
- 1/2" NPT Female Inlet

**620-ACP**

- Shower Head and Arm
- Pressure Compensating Flow Control
- Integral Flow Control
- 2.5 GPM Max. Flow Rate @ 80 PSI
- 1/2" NPT Female Inlet

**620-AVPCP**

- Vandal Resistant Shower Head with Arm, Flange, and Ball Joint
- Pressure Compensating Flow Control
- Integral Flow Control
- 2.5 GPM Max. Flow Rate @ 80 PSI
- 1/2" NPT Male Inlet

**620-CP**

- Shower Head with Ball Joint
- Pressure Compensating Flow Control
- Integral Flow Control
- 2.5 GPM Max. Flow Rate @ 80 PSI
- 1/2" NPT Female Inlet

**620-VPCP**

- Vandal Resistant Shower Head with Ball Joint
- Pressure Compensating Flow Control
- Integral Flow Control
- 2.5 GPM Max. Flow Rate @ 80 PSI
- 1/2" NPT Female Inlet

**621-CP**

- Wall Mounted Institutional Shower Head
- Vandal Resistant Mounting
- Pressure Compensating Flow Control
- Field Adjustable for 20° or 30° Spray Angle
- Tamper Resistant for Institutional Use
- 2.0 GPM Flow Rate @ 80 PSI
- 1/2" NPT Female Inlet

**749-SJKCP**

- Diverter Tub Spout
- 1/2" NPT Female Inlet

**415-021JKCP**

- 1/2" NPT Shower Arm
- 7" Overall Length

**749-016JKCP**

- 1/2" NPT Shower Arm Wall Flange
- 2-1/2" Diameter Round





Chicago Faucets, a member of the Geberit Group, is the leading brand of commercial faucets and fittings in the United States, offering a complete range of products for schools, laboratories, hospitals, office buildings, food service, airports, and sports facilities. Whatever your requirements may be, Chicago Faucets offers standard and made-to-order products that are designed to meet any commercial application.

The Chicago Faucet Company
2100 South Clearwater Drive
Des Plaines, IL 60018
Phone: 847/803-5000
Fax: 847/803-5454
Technical: 800/832-8783
www.chicagofaucets.com